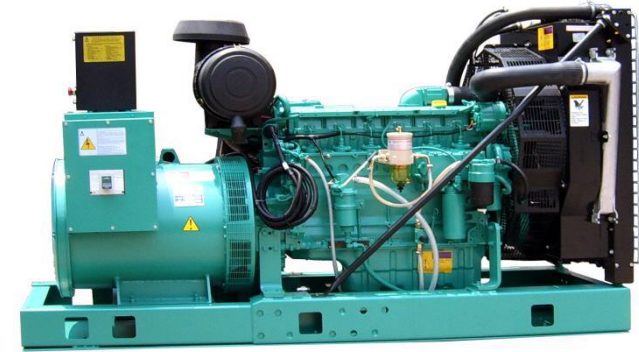


Datasheet

HCM193 Cummins Diesel Power Generator (6CTA8.3-G2)

140kW-175kVA
154kW-192.5kVA
50Hz



Equipment

Engine and alternator mounted on same frame steel skid.
Build in damper for anti-vibration.
Compact design, easy to operate and maintain.
Cummins brand engine.
Top brand AC alternator.
Full range protections, alarms with auto shutdown features.
Comply with ISO8628 national standard and ISO9001 quality standard. Specially designed horizontal/vertical, engine driven/electrical radiator. Industrial, Residential silencers.
Catalytic converters.
Heat exchangers.
Special spark arrestor silencers.
Standard set for "CE" certification.
Sound & Weatherproof canopy optional.
Spring, seismic anti-vibration mounts.
Advanced facility for FAT.

Genset Model	Prime Power (kW/kVA)	Standby Power (kW/kVA)	Fuel Consumption (l/h)	Diesel Engine Model	Bore × Stroke (mm)	Qua. Of Cylinder	Dimension L × W × H (mm)	Weight (kg)	Noise Level (dBA)
HCM23	16/20	18/22.5	5.2	4B3.9-G	102×120	4L	1600×830×1300	950	95
HCM28	20/25	22/27.5	6	4B3.9-G	102×120	4L	1600×830×1300	950	95
HCM33	24/32	26/32.5	7.2	4BT3.9-G	102×120	4L	1800×830×1300	1000	95
HCM41	30/37.5	33/41	9.6	4BT3.9-G	102×120	4L	1800×830×1300	1000	95
HCM56	40/50	45/56	12	4BTA3.9-G2	102×120	4L	1850×850×1300	1100	95
HCM63	45/56	50/62.5	13.2	4BTA3.9-G2	102×120	4L	1850×850×1430	1200	95
HCM80	58/72.5	64/80	17	6BT5.9-G2	102×120	6L	2150×850×1430	1250	95
HCM96	70/87.5	77/96	19	6BT5.9-G2	102×120	6L	2280×850×1430	1300	95
HCM110	80/100	88/110	23	6BT5.9-G2	102×120	6L	2280×850×1430	1400	95
HCM125	90/112.5	100/125	26	6BTA5.9-G2	102×120	6L	2400×830×1430	1550	95
HCM143	104/130	114/142.5	30	6BTAA5.9-G2	102×120	6L	2400×830×1430	1700	95
HCM165	120/150	132/165	36	6CTA8.3-G2	114×135	6L	2650×950×1450	2100	95
HCM193	140/175	154/192.5	40	6CTA8.3-G2	114×135	6L	2650×950×1450	2150	95
HCM206	150/187.5	165/206	42	6CTA8.3-G2	114×135	6L	2650×950×1450	2200	95
HCM220	160/200	176/220	44	6CTAA8.3-G2	114×135	6L	2800×950×1500	2300	102
HCM250	180/225	200/250	47	6LTAA8.9-G2	114×144	6L	2800×980×1530	2500	102
HCM275	200/250	220/275	50	6LTAA8.9-G2	114×144	6L	2800×980×1530	2500	102
HCM296	217/271	237/296	57	MTA11-G2A	125×147	6L	2900×980×1530	2800	102
HCM340	245/306	272/340	60	NTA855-G1A	140×152	6L	2950×980×1530	3100	102
HCM343	250/312.5	275/343	62	MTA11-G3	125×147	6L	2900×980×1530	2900	102
HCM350	256/320	280/350	64	NTA855-G1B	140×152	6L	2950×980×1530	3200	102
HCM388	280/350	310/387.5	76	NTA855-G2A	140×152	6L	3150×980×1530	3400	102
HCM413	300/375	330/412.5	83	NTAA855-G7A	140×152	6L	3220×1380×1550	3600	102
HCM450	320/400	360/450	86	NTAA855-G7A	140×152	6L	3300×1380×1550	3700	102

Genset Model	Prime Power (kW/kVA)	Standby Power (kW/kVA)	Fuel Consumption (l/h)	Diesel Engine Model	Bore × Stroke (mm)	Qua. Of Cylinder	Dimension L × W × H (mm)	Weight (kg)	Noise Level (dBA)
HCM500	360/450	400/500	97	KTA19-G3	159×159	6L	3550×1250×1800	4350	102
HCM550	400/500	440/550	107	KTA19-G3A	159×159	6L	3750×1250×1800	4800	102
HCM650	480/600	520/650	125	KTA19-G8	159×159	6L	3750×1500×1900	5000	105
HCM688	500/625	550/687.5	130	KTAA19-G6A	159×159	6L	3750×1500×1900	5400	105
HCM713	520/650	570/712.5	143	QSKTAA19-G3	159×159	6L	3900×1500×1900	5500	105
HCM825	600/750	660/825	167	KTA38-G2	159×159	12V	4650×1630×2270	7000	105
HCM880	640/800	704/880	170	KTA38-G2B	159×159	12V	4650×1630×2270	7460	105
HCM1000	728/910	800/1000	194	KTA38-G2A	159×159	12V	4650×1630×2270	7650	105
HCM1100	800/1000	880/1100	209	KTA38-G5	159×159	12V	4850×1830×2330	8650	105
HCM1250	900/1125	1000/1250	225	KTA38-G9	159×159	12V	4850×1830×2330	9300	105
HCM1400	1020/1275	1120/1400	254	KTA50-G3	159×159	16V	5200×1930×2400	10500	105
HCM1650	1142/1428	1320/1650	272	KTA50-G8	159×159	16V	5280×2000×2400	11000	105
HCM1675	1200/1500	1340/165	280	KTA50-GS8	159×159	16V	5280×2000×2400	11500	105
HCM2250	1600/2000	1800/2250	394	QSK60-G4	159×190	16V	6090×2282×2612	16644	105

Guangdong Honny Power-Tech Co., Ltd

Tel: 0086-769-2278 0359

Fax: 0086-769-2278 0357

Email: sales@honnypower.com

Website: www.honnypower.com

Address: No.2, Industry North Road, Songshan Lake, Dongguan, China

